

Cleaved-COL1A2 (G1102) rabbit pAb**Cat#: orb763909 (Manual)**

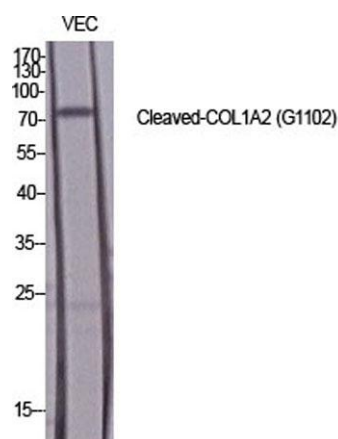
For research use only. Not intended for diagnostic use.

Product Name	Cleaved-COL1A2 (G1102) rabbit pAb
Host species	Rabbit
Applications	WB;ELISA
Species Cross-Reactivity	Human;Rat;Mouse;
Recommended dilutions	Western Blot: 1/500 - 1/2000. ELISA: 1/10000. Not yet tested in other applications.
Immunogen	The antiserum was produced against synthesized peptide derived from human Collagen I alpha2. AA range:1053-1102
Specificity	Cleaved-COL1A2 (G1102) Polyclonal Antibody detects endogenous levels of fragment of activated COL1A2 protein resulting from cleavage adjacent to G1102.
Formulation	Liquid in PBS containing 50% glycerol, 0.5% BSA and 0.02% sodium azide..
Storage	Store at -20°C. Avoid repeated freeze-thaw cycles.
Protein Name	Collagen alpha-2(I) chain
Gene Name	COL1A2
Cellular localization	Secreted, extracellular space, extracellular matrix .
Purification	The antibody was affinity-purified from rabbit antiserum by affinity-chromatography using epitope-specific immunogen.
Clonality	Polyclonal

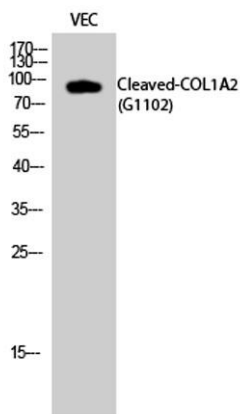
Concentration	1 mg/ml
Observed band	92kD
Human Gene ID	1278
Human Swiss-Prot Number	P08123
Alternative Names	COL1A2; Collagen alpha-2(I) chain; Alpha-2 type I collagen

Background

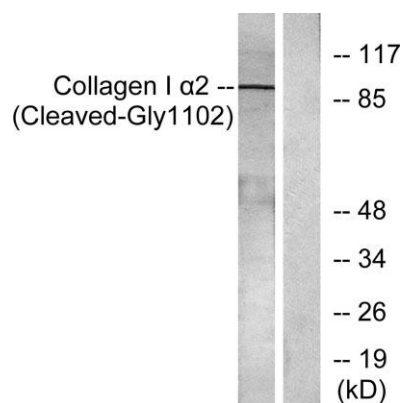
This gene encodes the pro-alpha2 chain of type I collagen whose triple helix comprises two alpha1 chains and one alpha2 chain. Type I is a fibril-forming collagen found in most connective tissues and is abundant in bone, cornea, dermis and tendon. Mutations in this gene are associated with osteogenesis imperfecta types I-IV, Ehlers-Danlos syndrome type VIIB, recessive Ehlers-Danlos syndrome Classical type, idiopathic osteoporosis, and atypical Marfan syndrome. Symptoms associated with mutations in this gene, however, tend to be less severe than mutations in the gene for the alpha1 chain of type I collagen (COL1A1) reflecting the different role of alpha2 chains in matrix integrity. Three transcripts, resulting from the use of alternate polyadenylation signals, have been identified for this gene. [provided by R. Dagleish, Feb 2008],



Western Blot analysis of various cells using Cleaved-COL1A2 (G1102) Polyclonal Antibody diluted at 1:1000



Western Blot analysis of VEC cells using Cleaved-COL1A2 (G1102) Polyclonal Antibody diluted at 1:1000



Western blot analysis of lysates from Jurkat cells, treated with etoposide 25uM 24h, using Collagen I alpha2 (Cleaved-Gly1102) Antibody. The lane on the right is blocked with the synthesized peptide.