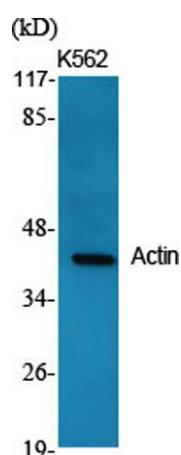


**Actin rabbit pAb****Cat#: orb764464 (Manual)**

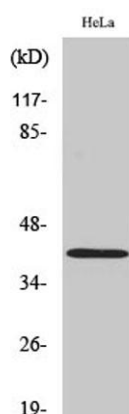
For research use only. Not intended for diagnostic use.

<b>Product Name</b>	Actin rabbit pAb
<b>Host species</b>	Rabbit
<b>Applications</b>	WB;IHC;IF;ELISA
<b>Species Cross-Reactivity</b>	Human;Mouse;Rat;Fish
<b>Recommended dilutions</b>	Western Blot: 1/500 - 1/2000. Immunohistochemistry: 1/100 - 1/300. ELISA: 1/10000. Not yet tested in other applications.
<b>Immunogen</b>	The antiserum was produced against synthesized peptide derived from human Actin. AA range:326-375
<b>Specificity</b>	Actin Polyclonal Antibody detects endogenous levels of Actin protein.
<b>Formulation</b>	Liquid in PBS containing 50% glycerol, 0.5% BSA and 0.02% sodium azide..
<b>Storage</b>	Store at -20°C. Avoid repeated freeze-thaw cycles.
<b>Protein Name</b>	Actin cytoplasmic 2
<b>Gene Name</b>	ACTG1
<b>Cellular localization</b>	Cytoplasm, cytoskeleton . Nucleus . Localized in cytoplasmic mRNP granules containing untranslated mRNAs. .
<b>Purification</b>	The antibody was affinity-purified from rabbit antiserum by affinity-chromatography using epitope-specific immunogen.
<b>Clonality</b>	Polyclonal

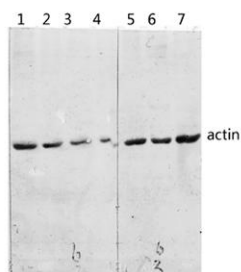
<b>Concentration</b>	1 mg/ml
<b>Observed band</b>	45kD
<b>Human Gene ID</b>	60/71
<b>Human Swiss-Prot Number</b>	P60709/Q9BYX7/P63261
<b>Alternative Names</b>	ACTB; Actin; cytoplasmic 1; Beta-actin; POTEKP; ACTBL3; FKSG30; Putative beta-actin-like protein 3; Kappa-actin; POTE ankyrin domain family member K; ACTG1; ACTB; ACTG; Actin, cytoplasmic 2; Gamma-actin
<b>Background</b>	This gene encodes one of six different actin proteins. Actins are highly conserved proteins that are involved in cell motility, structure, and integrity. This actin is a major constituent of the contractile apparatus and one of the two nonmuscle cytoskeletal actins. [provided by RefSeq, Jul 2008],



**Western Blot analysis of various cells using Actin Polyclonal Antibody diluted at 1:2000**

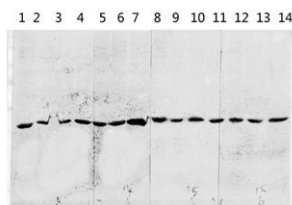


**Western Blot analysis of HeLa cells using Actin Polyclonal Antibody diluted at 1:2000**



1 MCF-7  
2 U2OS  
3 Hela UV  
4 MCF-7 UV  
5 3T3 UV  
6 KB UV  
7 U2OS UV

**Western blot analysis of various lysis using Actin Polyclonal Antibody diluted at 1:2000. Secondary antibody(catalog#:RS0002) was diluted at 1:20000**



1 mouse-lung  
2 mouse-brain  
3 mouse-spleen  
4 mouse-kidney  
5 mouse-heart  
6 293T  
7 Hela  
8 KB  
9 SH-SY5Y  
10 mouse-liver  
11 3T3  
12 A549  
13 VEC

**Western blot analysis of various lysis using Actin Polyclonal Antibody diluted at 1:2000. Secondary antibody(catalog#:RS0002) was diluted at 1:20000**