

Stat6 rabbit pAb**Cat#: orb770178 (Manual)**

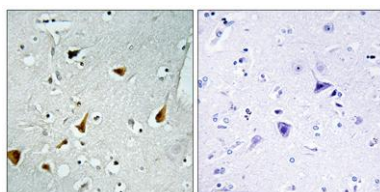
For research use only. Not intended for diagnostic use.

Product Name	Stat6 rabbit pAb
Host species	Rabbit
Applications	WB;IHC;IF;ELISA
Species Cross-Reactivity	Human;Mouse;Rat;Monkey
Recommended dilutions	Western Blot: 1/500 - 1/2000. Immunohistochemistry: 1/100 - 1/300. ELISA: 1/5000. Not yet tested in other applications.
Immunogen	The antiserum was produced against synthesized peptide derived from human STAT6. AA range:608-657
Specificity	Stat6 Polyclonal Antibody detects endogenous levels of Stat6 protein.
Formulation	Liquid in PBS containing 50% glycerol, 0.5% BSA and 0.02% sodium azide..
Storage	Store at -20°C. Avoid repeated freeze-thaw cycles.
Protein Name	Signal transducer and activator of transcription 6
Gene Name	STAT6
Cellular localization	Cytoplasm. Nucleus. Translocated into the nucleus in response to phosphorylation.
Purification	The antibody was affinity-purified from rabbit antiserum by affinity-chromatography using epitope-specific immunogen.
Clonality	Polyclonal

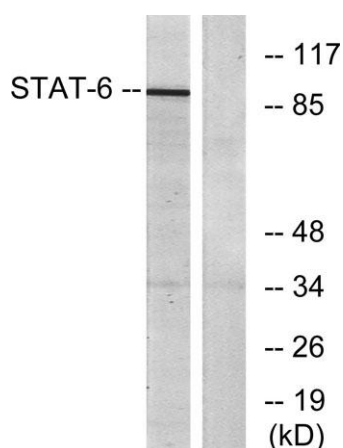
Concentration	1 mg/ml
Observed band	94kD
Human Gene ID	6778
Human Swiss-Prot Number	P42226
Alternative Names	STAT6; Signal transducer and activator of transcription 6; IL-4 Stat

Background

The protein encoded by this gene is a member of the STAT family of transcription factors. In response to cytokines and growth factors, STAT family members are phosphorylated by the receptor associated kinases, and then form homo- or heterodimers that translocate to the cell nucleus where they act as transcription activators. This protein plays a central role in exerting IL4 mediated biological responses. It is found to induce the expression of BCL2L1/BCL-X(L), which is responsible for the anti-apoptotic activity of IL4. Knockout studies in mice suggested the roles of this gene in differentiation of T helper 2 (Th2) cells, expression of cell surface markers, and class switch of immunoglobulins. Alternative splicing results in multiple transcript variants.[provided by RefSeq, May 2010],



Immunohistochemistry analysis of paraffin-embedded human brain tissue, using STAT6 Antibody. The picture on the right is blocked with the synthesized peptide.



Western blot analysis of lysates from HeLa cells, using STAT6 Antibody. The lane on the right is blocked with the synthesized peptide.