

## Human Retinoblastoma Protein 1 (RB1) ELISA Kit

Cat #: orb778829 (manual)

*For research use only. Not intended for diagnostic use.*

### Product Features

**Detectable Sample Type:** Tissue homogenates, cell lysates and other biological fluids

**Sensitivity:** 0.055 ng/mL

**Detection Range:** 0.16-10 ng/mL

**Specificity:** This assay has high sensitivity and excellent specificity for detection of Human RB1. No significant cross-reactivity or interference between Human RB1 and analogues was observed.

**Internal Test Data:** N/A

### Assay Principle

The test principle applied in this kit is Sandwich enzyme immunoassay. The microtiter plate provided in this kit has been pre-coated with an antibody specific to Human RB1. Standards or samples are added to the appropriate microtiter plate wells then with a biotin-conjugated antibody specific to Human RB1. Next, Avidin conjugated to Horseradish Peroxidase (HRP) is added to each microplate well and incubated. After TMB substrate solution is added, only those wells that contain Human RB1, biotin-conjugated antibody and enzyme-conjugated Avidin will exhibit a change in color. The enzyme-substrate reaction is terminated by the addition of sulphuric acid solution and the color change is measured spectrophotometrically at a wavelength of 450nm ± 10nm. The concentration of Human RB1 in the samples is then determined by comparing the OD of the samples to the standard curve.

### Kit Components

| Reagents                       | Quantity           |                     | Storage Condition |
|--------------------------------|--------------------|---------------------|-------------------|
|                                | 48T                | 96T                 |                   |
| Pre-Coated Microplate          | 6 strips x 8 wells | 12 strips x 8 wells | 4°C/-20°C         |
| Standard (Lyophilized)         | 1 vial             | 2 vials             | 4°C/-20°C         |
| Biotinylated Antibody (100×)   | 60 µL              | 120 µL              | 4°C/-20°C         |
| Streptavidin-HRP (100×)        | 60 µL              | 120 µL              | 4°C/-20°C         |
| Standard/Sample Diluent Buffer | 10 mL              | 20 mL               | 4°C/-20°C         |
| Biotinylated Antibody Diluent  | 6 mL               | 12 mL               | 4°C/-20°C         |
| HRP Diluent                    | 6 mL               | 12 mL               | 4°C/-20°C         |

|                        |         |          |                           |
|------------------------|---------|----------|---------------------------|
| Wash Buffer (25×)      | 10 mL   | 20 mL    | 4°C/-20°C                 |
| TMB Substrate Solution | 6 mL    | 10 mL    | 4°C/-20°C (store in dark) |
| Stop Reagent           | 3 mL    | 6 mL     | 4°C/-20°C                 |
| Plate Covers           | 1 piece | 2 pieces | RT                        |

### Special Explanation

1. \*If the kit is opened, Store the whole kit at 4°C. If the kit is not used up in 1 week. Store the Pre-Coated Microplate, Standard, Biotinylated Antibody and Streptavidin-HRP at -20°C, the rest reagents at 4°C, please used up within 6 months.

\*If the kit is not open, store the whole kit: 4°C (short-term storage, valid for 6 months); -20°C (long-term storage, valid for 1 year). Avoid repeated freeze-thaw cycles.

2. Do not use the kit beyond the expiration date.
3. If the whole kit is stored at -20°C, place the kit at 4°C the day before the experiment.
4. After opening the package, please check that all components are complete.
5. The cap must be tightened to prevent evaporation and microbial contamination. The reagents volume is slightly more than the volume marked on labels, please use accurate measuring equipment and do not pour directly into the vial.

All kit components have been formulated and quality control tested to function successfully. Do not mix or substitute reagents or materials from other kits, detection effect of the kit will not be guaranteed if utilized separately or substituted.

### Materials Required but Not Supplied

1. Microplate reader capable of measuring absorbance at  $450 \pm 10$  nm.
2. High-speed centrifuge.
3. Electro-heating standing-temperature cultivator.
4. Absorbent paper.
5. Double distilled water or deionized water.
6. Single or multi-channel pipettes with high precision and disposable tips.
7. Precision pipettes to deliver 2  $\mu$ L to 1 mL volumes.

### Sample Preparation

1. Equilibrate all materials and prepared reagents to room temperature prior to use. Prior to use, mix all reagents thoroughly taking care not to create any foam within the vials.
2. The user should calculate the possible amount of the samples used in the whole test. Please reserve sufficient samples in advance.

Please predict the concentration before assaying. If values for these are not within the range of the Standard curve, users must determine the optimal sample dilutions for their particular experiments.

### Sample Collection and Storage

**Serum** - Samples should be collected into a serum separator tube. After clotting for 2 hours at room temperature or overnight at 4°C, and then centrifuging at 1000 × g for 20 minutes. Assay freshly prepared serum immediately or store samples in aliquot at -20°C or -80°C for later use. Avoid repeated freeze-thaw cycles.

**Plasma** - Collect plasma using EDTA or heparin as an anticoagulant. Centrifuge samples at 1000 × g and 2-8°C for 15 minutes within 30 minutes of collection. Remove plasma and assay immediately or store samples in aliquot at -20°C or -80°C for later use. Avoid repeated freeze-thaw cycles.

**Tissue homogenates** - The preparation of tissue homogenates will vary depending upon tissue type.

1. Rinse the tissues in pre-cooled PBS to completely remove excess blood, and weigh them before homogenization.
2. Mince the tissues to small pieces and homogenized them in fresh lysis buffer (different lysis buffer needs to be chosen based on subcellular location of the target protein) (PBS can be used as the lysis buffer of most tissues) (w:v = 1:9, e.g. 900 µL lysis buffer is added in 100 mg tissue sample) with a glass homogenizer on ice (micro tissue grinders, too).
3. Ultrasound the obtained suspension with an ultrasonic cell disrupter until the solution is clear.
4. Then, centrifuge the homogenates for 5 minutes at 10000 × g and collect the supernatant and assay immediately or store in aliquots at ≤ -20°C.

\*Note: Tissue homogenates are recommended to be tested for protein concentration at the same time to obtain a more accurate concentration of the test substance per mg of protein.

**Cell lysates** - Cells need to be lysed before assaying according to the following directions.

1. Adherent cells should be washed by pre-cooled PBS gently, and then be detached with trypsin, and collect them by centrifugation at 1000 × g for 5 minutes (suspension cells can be collected by centrifugation directly).
2. Wash cells 3 times in pre-cooled PBS.
3. Then, resuspend the cells in fresh lysis buffer with concentration of 10<sup>7</sup> cells/mL. If it is necessary, the cells could be subjected to ultrasonication until the solution is clear.
4. Centrifuge at 1500 × g for 10 minutes at 2-8°C to remove cellular debris. Assay immediately or store in aliquots at ≤ -20°C.

**Urine** - Collect the first urine of the day (mid-stream) and discharge it directly into a sterile container.

Centrifuge to remove particulate matter, assay immediately or aliquot and store at ≤ -20°C. Avoid repeated freeze-thaw cycles.

**Saliva** - Collect saliva using a collection device or equivalent. Centrifuge samples at 1000 × g at 2-8°C for 15 minutes. Remove particulates and assay immediately or store samples in aliquot at ≤ -20°C. Avoid repeated freeze-thaw cycles.

**Feces** - Dry feces were collected as much as possible, weighing more than 50 mg. The feces were washed three times with PBS (w:v = 1:9, e.g. 900 µL lysis buffer is added in 100 mg feces), sonicated (or mashed) and centrifuged at 5000×g for 10 minutes, where the supernatant was collected for testing.

**Cell culture supernatants and other biological fluids** - Centrifuge samples at 1000 × g for 20 minutes. Collect the supernatant and assay immediately or store samples in aliquot at -20°C or -80°C for later use. Avoid repeated freeze-thaw cycles.

**Cerebrospinal fluid (CSF)** - Remove particulates by centrifugation and assay immediately or aliquot and store samples at  $\leq 20^{\circ}\text{C}$ . Avoid repeated freeze-thaw cycles.

## Sample Dilution Proposal

1. Fresh, normal serum/plasma samples are recommended for Original solution testing.
2. Due to individual differences, the recommended dilution Ratio are for reference only, it is recommended to do preliminary experiment to determine the dilution ratio.

## Notes

1. Samples to be used within 5 days may be stored at  $4^{\circ}\text{C}$ , otherwise samples must be stored at  $-20^{\circ}\text{C}$  ( $\leq 1$  month) or  $-80^{\circ}\text{C}$  ( $\leq 2$  months) to avoid loss of bioactivity and contamination. Avoid repeated freeze-thaw cycles.
2. Sample hemolysis will influence the result, so it should not be used.
3. When performing the assay, bring samples to room temperature.

## Reagent Preparation

1. Bring all kit components and samples to room temperature ( $18-25^{\circ}\text{C}$ ) before use. Make sure all components are dissolved and mixed well before using the kit.
2. If the kit will not be used up in 1 time, please only take out strips and reagents for present experiment, and save the remaining strips and reagents as specified.
3. Dilute the  $25\times$  Wash Buffer into  $1\times$  Wash Buffer with double-distilled Water.
4. **Standard Working Solution** - Centrifuge the Standard at  $1000 \times g$  for 1 minute. Reconstitute the Standard with 1.0 mL of Standard Diluent Buffer, kept for 10 minutes at room temperature, shake gently (not to foam). The concentration of the Standard in the stock solution is 10 ng/mL. Please prepare 7 tubes containing 0.5 mL Standard Diluent Buffer and use the Diluted Standard to produce a double dilution series according to the picture shown below. To mix each tube thoroughly before the next transfer, pipette the solution up and down several times. Set up 7 points of Diluted Standard such as 10 ng/mL, 5 ng/mL, 2.5 ng/mL, 1.25 ng/mL, 0.63 ng/mL, 0.32 ng/mL, 0.16 ng/mL, and the last EP tubes with Standard Diluent is the **Blank** as 0 ng/mL. In order to guarantee the experimental results validity, please use the new Standard Solution for each experiment. When diluting the Standard from high concentration to low concentration, replace the pipette tip for each dilution. Note: the last tube is regarded as a **Blank** and **do not** pipette solution into it from the former tube.



10                      5                      2.5                      1.25                      0.63                      0.32                      0.16  
ng/mL

5. **1× Biotinylated Antibody and 1× Streptavidin-HRP** - Briefly spin or centrifuge the stock Biotinylated Antibody and Streptavidin-HRP before use. Dilute them to the working concentration 100-fold with Biotinylated Antibody Diluent and HRP Diluent, respectively.
6. **TMB Substrate Solution** - Aspirate the needed dosage of the solution with sterilized tips and **do not** dump the residual solution into the vial again.

### Notes

1. After receiving the kit, please store the reagents according to the instructions. The plates can be disassembled to single strips. Please use it in batches on demand.
2. The test tubes, pipette tips and reagents used in the experiment are all disposable and are strictly prohibited from being reused; otherwise, the experiment results will be affected. Kit reagents of different batches cannot be mixed (except TMB, Washing Buffer and Stop Reagent).
3. Lyophilized Standards, Biotinylated Antibody, and Streptavidin-HRP are small in volume and may be scattered in various parts of the tube during transportation. Please centrifuge at  $1000 \times g$  for 1 minute before use. Then, carefully pipette 4-5 times to mix the Solution. Please configure the Standard, Biotinylated Antibody and Streptavidin-HRP Working Solution according to the required amount, and use the corresponding Dilution Solution, cannot be mixed used.
4. Bring all reagents to room temperature (18-25°C) before use. If crystals form in the concentrate (25×), it is a normal phenomenon. Heat it to room temperature (the heating temperature should not exceed 40°C), gently Mix until crystals are completely dissolved.
5. Prepare to dissolve Standard within 15 minutes before the test. This Standard Working Solution can only be used once. If the dissolved Standard is not used up, please discard it. The sample addition needs to be rapid. Each sample addition should preferably be controlled within 10 minutes. To ensure experimental accuracy, it is recommended to test duplicate wells, and when pipetting reagents, keep a consistent order of additions from 1 well to another, this will ensure the same incubation time for all wells.
6. During the washing process, the residual washing liquid in the reaction well should be patted dry on absorbent paper. Do not put the paper directly into the reaction well to absorb water. Before reading, pay attention to remove the residual liquid and fingerprints at the bottom, so as not to affect the microplate reader reading.
7. TMB Substrate Solution is light-sensitive, avoid prolonged exposure to light. Dispense the TMB Substrate Solution within 15 minutes following the washing of the microtiter plate. In addition, avoid contact between TMB Substrate Solution and metal to prevent color development. TMB is contaminated if it turns blue color before use and should be discarded. TMB is toxic, avoid direct contact with hands.
8. Bacterial or fungal contamination of either samples or reagents or cross-contamination, between reagents may cause erroneous results.

### Assay Procedure

1. Determine wells for Diluted Standard, Blank and Sample. Prepare 7 wells for Standard, 1 well for Blank. Add 100  $\mu\text{L}$  each of Standard Working Solution (please refer to **Reagent Preparation**), or 100  $\mu\text{L}$  of samples into the appropriate wells. Cover with the Plate Cover. Incubate for 80 minutes at 37°C. Note: solutions should be added to the bottom of the micro ELISA plate well, avoid touching the inside wall and causing foaming as much as possible.

2. Pour out the liquid of each well. Aspirate the solution and wash with 200  $\mu\text{L}$  of 1 $\times$  Wash Solution to each well and let it sit for 1-2 minutes. Remove the remaining liquid from all wells completely by snapping the plate onto absorbent paper. Totally wash 3 times. After the last wash, remove any remaining Wash Buffer by aspirating or decanting. Invert the plate and blot it against absorbent paper.

Notes:

(a) When adding Washing Solution, the pipette tip should not touch the wall of the wells to avoid contamination.

(b) Pay attention to pouring the washing liquid directly to ensure that the washing liquid does not contaminate other wells.

3. Add 100  $\mu\text{L}$  of Biotinylated Antibody Working Solution to each well, cover the wells with the Plate Cover and incubate for 50 minutes at 37°C.

4. Repeat the aspiration, wash process for total 3 times as conducted in step 2.

5. Add 100  $\mu\text{L}$  of Streptavidin-HRP Working Solution to each well, cover the wells with the plate sealer and incubate for 50 minutes at 37°C.

6. Repeat the aspiration, wash process for total 5 times as conducted in step 2.

7. Add 90  $\mu\text{L}$  of TMB Substrate Solution to each well. Cover with a new Plate Cover. Incubate for 20 minutes at 37°C (Don't exceed 30 minutes) in the dark. The liquid will turn blue by the addition of TMB Substrate Solution. Preheat the Microplate Reader for about 15 minutes before OD measurement.

8. Add 50  $\mu\text{L}$  of Stop Reagent to each well. The liquid will turn yellow by the addition of Stop Reagent. Mix the liquid by tapping the side of the plate. If color change does not appear uniform, gently tap the plate to ensure thorough mixing. The insertion order of the Stop Reagent should be the same as that of the TMB Substrate Solution.

9. Wipe off any drop of water and fingerprint on the bottom of the plate and confirm there is no bubble on the surface of the liquid. Then, run the microplate reader and conduct measurement at 450 nm immediately.

## Assay Procedure Summary



1. After the kit is equilibrated at room temperature, add 100  $\mu$ L of Standard Working Buffer (gradually diluted according to the instructions) or 100  $\mu$ L of sample to each well, and incubate at 37°C for 80 minutes.

Biotinylated antibody



2. Discard the liquid in the plate, add 200  $\mu$ L 1 $\times$  Wash Buffer to each well, and wash the plate 3 times. After pat it dry against clean absorbent paper, add 100  $\mu$ L Biotinylated Antibody Working Solution (1 $\times$ ) to each well, incubate at 37°C for 50 minutes.

Streptavidin-HRP



3. Discard the liquid in the plate, add 200  $\mu$ L 1 $\times$  Wash Buffer to each well, and wash the plate 3 times. After pat it dry against clean absorbent paper, add 100  $\mu$ L 1 $\times$  Streptavidin-HRP Working Solution to each well, incubate at 37°C for 50 minutes.

TMB



4. Discard the liquid in the plate, add 200  $\mu$ L 1 $\times$  Wash Buffer to each well, and wash the plate 5 times. After pat it dry against clean absorbent paper, add 90  $\mu$ L TMB Substrate Solution to each well, incubate at 37°C for 20 minutes in the dark.

Stop solution

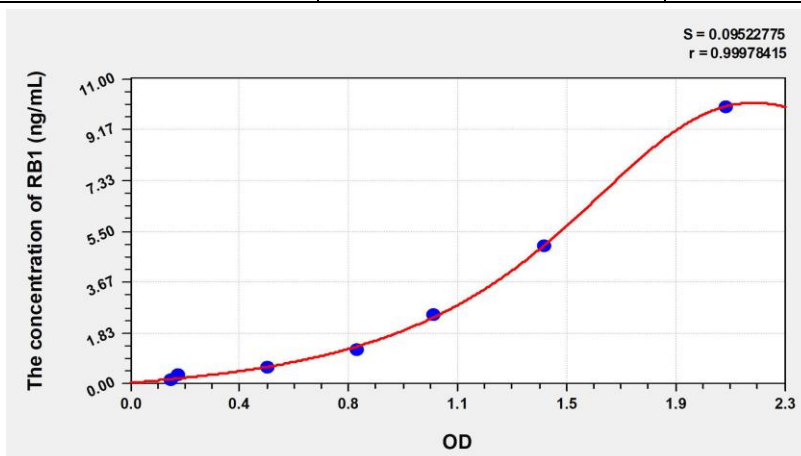


5. Add 50  $\mu$ L Stop Solution to each well, shake plate on a plate shaker for 1 minute to mix. Record the OD at 450 nm immediately, calculation of the results.

### Calculation of Results

Average the duplicate readings for each Standard, Control, and Samples and subtract the average zero Standard optical density. Construct a Standard curve with the Human RB1 concentration on the y-axis and absorbance on the x-axis and draw a best fit curve through the points on the graph. If samples have been diluted, the concentration read from the Standard curve must be multiplied by the dilution factor. Using some plot software, for instance, curve expert.

| Concentration (ng/mL) | OD    | Corrected OD |
|-----------------------|-------|--------------|
| 10                    | 2.156 | 2.067        |
| 5                     | 1.527 | 1.438        |
| 2.5                   | 1.144 | 1.055        |
| 1.25                  | 0.877 | 0.788        |
| 0.63                  | 0.567 | 0.478        |
| 0.32                  | 0.256 | 0.167        |
| 0.16                  | 0.23  | 0.141        |
| 0                     | 0.089 | 0.000        |



Note: this graph is for reference only

### Performance

#### Precision

Intra-assay Precision (Precision within an assay): CV% < 8%

Three samples of known concentration were tested twenty times on 1 plate to assess intra-assay precision.

Inter-assay Precision (precision between assays): CV% < 10%

Three samples of known concentration were tested in forty separate assays to assess inter-assay precision.

### Recovery

Matrices listed below were spiked with certain level of recombinant Human RB1 and the recovery rates were calculated by comparing the measured value to the expected amount of Human RB1 in samples.

| Matrix                 | Recovery range | Average |
|------------------------|----------------|---------|
| Serum (n = 5)          | 78-92%         | 85%     |
| EDTA plasma (n = 5)    | 88-106%        | 97%     |
| Heparin plasma (n = 5) | 81-95%         | 88%     |

### Linearity

The linearity of the kit was assayed by testing samples spiked with appropriate concentration of Human RB1 and their serial dilutions. The results were demonstrated by the percentage of calculated concentration to the expected.

| Sample                 | 1:2     | 1:4     | 1:8     | 1:16   |
|------------------------|---------|---------|---------|--------|
| Serum (n = 5)          | 87-96%  | 82-95%  | 93-102% | 87-96% |
| EDTA plasma (n = 5)    | 87-98%  | 87-100% | 85-94%  | 83-96% |
| Heparin plasma (n = 5) | 95-106% | 83-96%  | 87-98%  | 78-89% |

### ELISA Troubleshooting

#### High background/non-specific staining

| Description of results  | Possible reason  | Recommendations and precautions   |
|---|--|---|
| After termination, the whole plate results show a uniform yellow or light color; or the Standard curve is linear but the background is too high | The yellowing of the whole plate may be caused by wrong addition of other reagents | Check the components and lot numbers of the reagents before the experiment, and confirm that all components belong to the corresponding kit. Reagents from different kits or different lot numbers cannot be mixed. |
|   | ELISA plate was not washed sufficiently  | Make sure that the same amount of Washing Solution is added to each microwell during the washing process. After washing, press the ELISA plate firmly on the absorbent paper to remove the residual buffer.         |
|   | Incubation time too long   | Please strictly follow the steps of the manual  |

|  |  |   |
|--|--|---|
|  | Streptavidin-HRP contaminates the tip and TMB container or positive control contaminates the Pre-coated Microplate | When absorbing different reagents, the tips should be replaced. When configuring different reagent components, different storage vessels should be used. Please use a pipette during operation. |
|  | Biotinylated Antibody or Streptavidin-HRP concentration too high   | Check whether the concentration calculation is correct or use after further dilution.   |
|  | Substrate exposure or contamination prior to use   | Store in the dark at all times before adding substrate.   |
|  | Color development time is too long   | Please strictly follow the steps of the manual.   |
|  | The wrong filter was used when the absorbance value was read   | When TMB is used as the substrate, the absorbance should be read at 450 nm.   |

### NO color plates

| Description of results  | Possible reason  | Recommendations and precautions   |
|---|--|---|
| After the color development step, all wells of the ELISA plate are colorless; the positive control is not obvious | Mixed use of component reagents  | Please read labels clearly when preparing or using  |
|   | In the process of plate washing and sample enzyme contaminated addition, the marker is and inactivated, and loses its ability to catalyze the color developing agent | Confirm that the container holding the ELISA plate does not contain enzyme inhibitors (such as $\text{NaN}_3$ , etc.) and confirm that the container for preparing the Wash Solution has been washed. |
|   | Missing a reagent or a step  | Review the manual in detail and strictly follow the operating steps   |

### Light color

| Description of results   | Possible reason  | Recommendations and precautions   |
|--|--|---|
| The Standard is normal, the color of the sample is light                           | The sample uses $\text{NaN}_3$ preservative, which inhibits the reaction of the enzyme       | Samples cannot use $\text{NaN}_3$   |
|  | The sample to be tested may not contain strong positive samples, so the result may be normal | In case of doubt, please test again.  |
| The visual result is normal, but the reading value of the microplate reader is low | Wrong filter used for absorbance reading   | When TMB is used as the substrate, the absorbance should be read at 450 nm. |

|   |   |  |
|---|---|--|
| All wells, including Standard and Samples, are lighter in color | Insufficient incubation time  | Timer accurate timing  |
|   | Insufficient color reaction   | Usually 15 - 30 minutes  |
|   | The number of washings increases, and the dilution ratio of the concentrated lotion does not meet the requirements  | Reduce the impact of washing, dilute the concentrated lotion and washing time according to the manual, and accurately record the washing times and dosage.   |
|   | Distilled water quality problem   | The prepared lotion must be tested to see if the pH value is neutral.  |
|   | In the process of plate washing and sample addition, the enzyme marker is contaminated and inactivated, and loses its ability to catalyze the color developing agent.     | Confirm that the container holding the ELISA plate does not contain enzyme inhibitors (such as $\text{NaN}_3$ , etc.), confirm that the container for preparing the Washing Solution has been washed, and confirm that the purified water for preparing the Washing Solution meets the requirements and is not contaminated. |
|   | The kit has expired or been improperly stored   | Please use it within the expiration and store it in accordance with the storage conditions recommended in the manual to avoid contamination.   |
|   | Reagents and samples are not equilibrated before use  | All reagents and samples should be equilibrated at room temperature for about 30 minutes.  |
| Poor repeatability  | Insufficient suction volume of the pipette, too fast discharge of pipetting suction, too much liquid hanging on the inner wall of the tip or the inner wall is not clean. | To calibrate the pipette, the tips should be matched, each time the tips should fit tightly, the pipetting should not be too fast, and the discharge should be complete. The inner wall of the tips should be clean, and it is best to use it once.  |
|   | Incubation temperature constant temperature effect is not good  | Keep the temperature constant to avoid the local temperature being too high or too low   |
|   | When adding liquid, too much remains on the medial wall of wells  | When adding liquid, the tip should try to add liquid along the bottom of the medial wall of wells without touching the bottom of the hole.   |
|   | Reuse of consumables  | The tips should be replaced when different reagents are drawn, and different storage vessels should be used when configuring different reagent components.   |
|   | The bottom of the microwell is scratched or there is dirt   | Be careful when operating, be careful not to touch the bottom and wipe the bottom of the microplate to remove dirt or fingerprints.<br>Technical repetition of the same sample for 3 times, including more than 2 approximate values.  |

|   |   |  |
|---|---|--|
|   | Cross-contamination during sample addition    | Try to avoid cross-contamination when adding samples   |
| The color of plate is chaotic and irregular | Cross-contamination from manual plate washing | When washing the plates by hand, the first 3 injections of the lotion should be discarded immediately, and the soaking time should be set for the next few times to reduce cross-contamination.  |
|   | Cross-contamination when clapping             | Use a suitable absorbent paper towel when clapping the plate, do not pat irrelevant substances into the well of the plate, and try not to pat in the same position to avoid cross-contamination. |

| Description of results                      | Possible reason  | Recommendations and precautions  |
|---|--|--|
| The color of plate is chaotic and irregular | The liquid filling head of the plate washer is blocked, resulting in unsatisfactory liquid addition or large residual amount of liquid suction, resulting in the color of plate is chaotic and irregular | Unblock the liquid addition head, so that each well is filled with washing liquid when washing the plate and the residual amount should be small when aspirating liquid. |
|   | Incomplete centrifugation of the sample, resulting in coagulation in the reaction well or interference of sediment or residual cellular components   | Serum plasma should be fully centrifuged at 3000 rpm for more than 6 minutes   |
|   | The sample is stored for too long time, resulting in contamination.  | Samples should be kept fresh or stored at low temperature to prevent contamination   |
|   | Incorrect preparation of Washing Solution or direct misuse of concentrated Washing Solution  | Please configure according to the manual   |

### Declaration

1. For research use only. Not intended for diagnostic use.
2. The kit may not be suitable for special experimental samples where the validity of the experiment itself is uncertain, such as gene knockout experiments.
3. Certain natural or recombinant proteins, including prokaryotic and eukaryotic recombinant proteins, may not be detected because they do not match the detection antibody and capture antibody used in this product.

This kit is not compared with similar kits from other manufacturers or products with different methods to detect the same object, so inconsistent test results cannot be ruled out.

### **Safety Notes**

1. This kit is only used for lab research and development and should not be used for human or animals.
2. Reagents should be regarded as hazardous substances and should be handled carefully and correctly.
3. Gloves, lab coats, and goggles should always be worn to avoid skin and eyes coming into contact with Stop Solution and TMB. In case of contact, wash thoroughly with water.